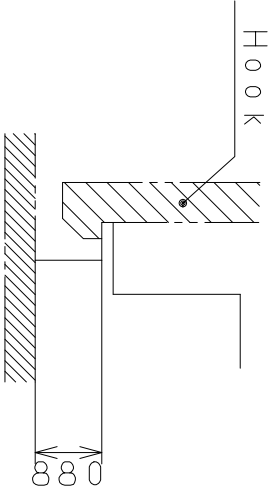
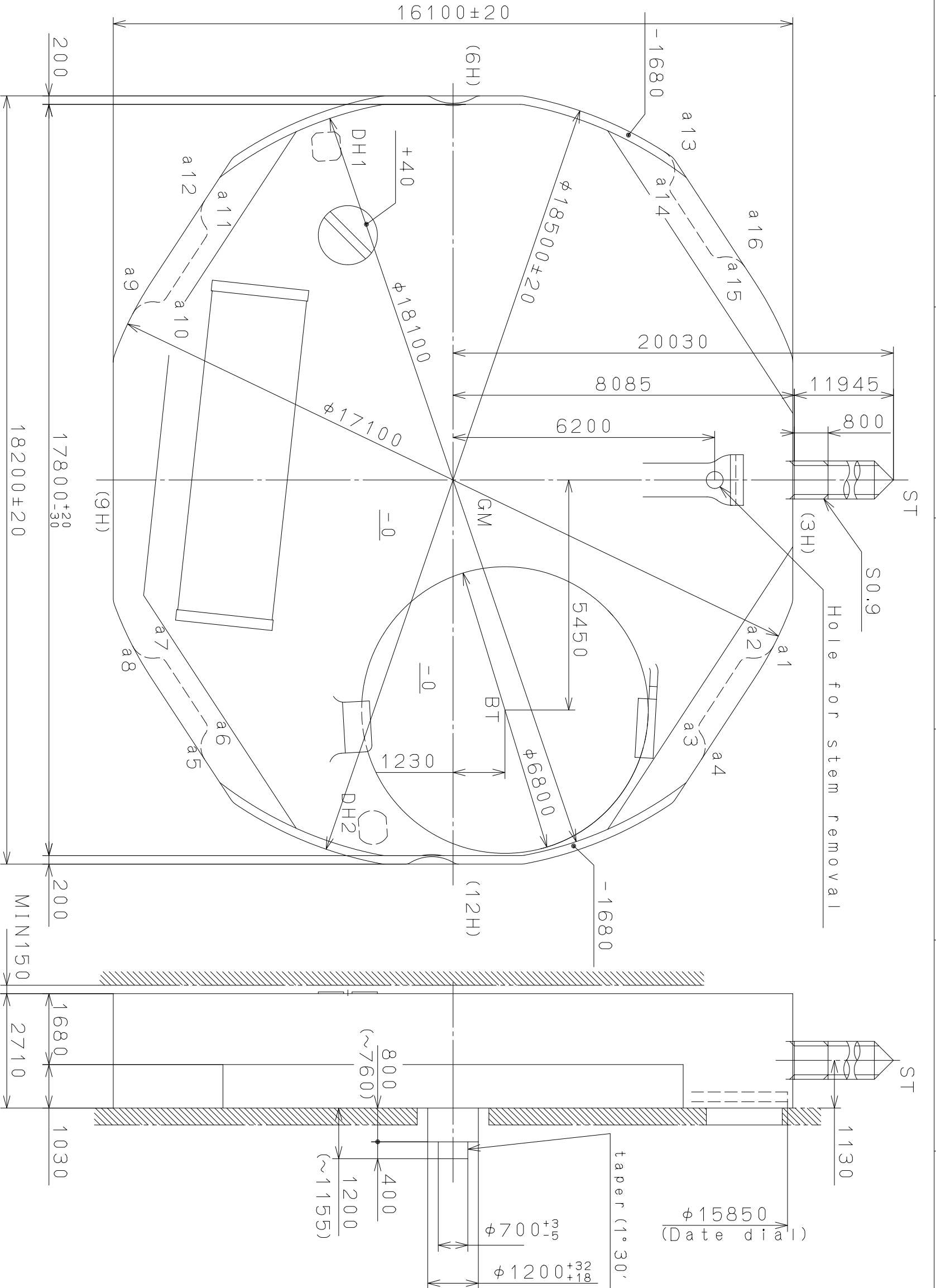


This drawing is provisional and subject to our reconfirmation and/or revision without notice.

DH1~DH2=16171 (±20)

Coordinates

記号	X	Y	R
GM	0	0	—
DH1	-7900	-3000	—
DH2	8234	-1900	—
a1	3693	7119	530
a2	4431	6984	220
a3	5871	6041	220
a4	6325	5444	530
a5	6325	-5444	530
a6	5871	-6041	220
a7	4431	-6984	220
a8	3693	-7119	530
a9	-3693	-7119	530
a10	-4431	-6984	220
a11	-5871	-6041	220
a12	-6325	-5444	530
a13	-7331	4722	530
a14	-6923	5351	220
a15	-5488	6291	220
a16	-4760	6470	530

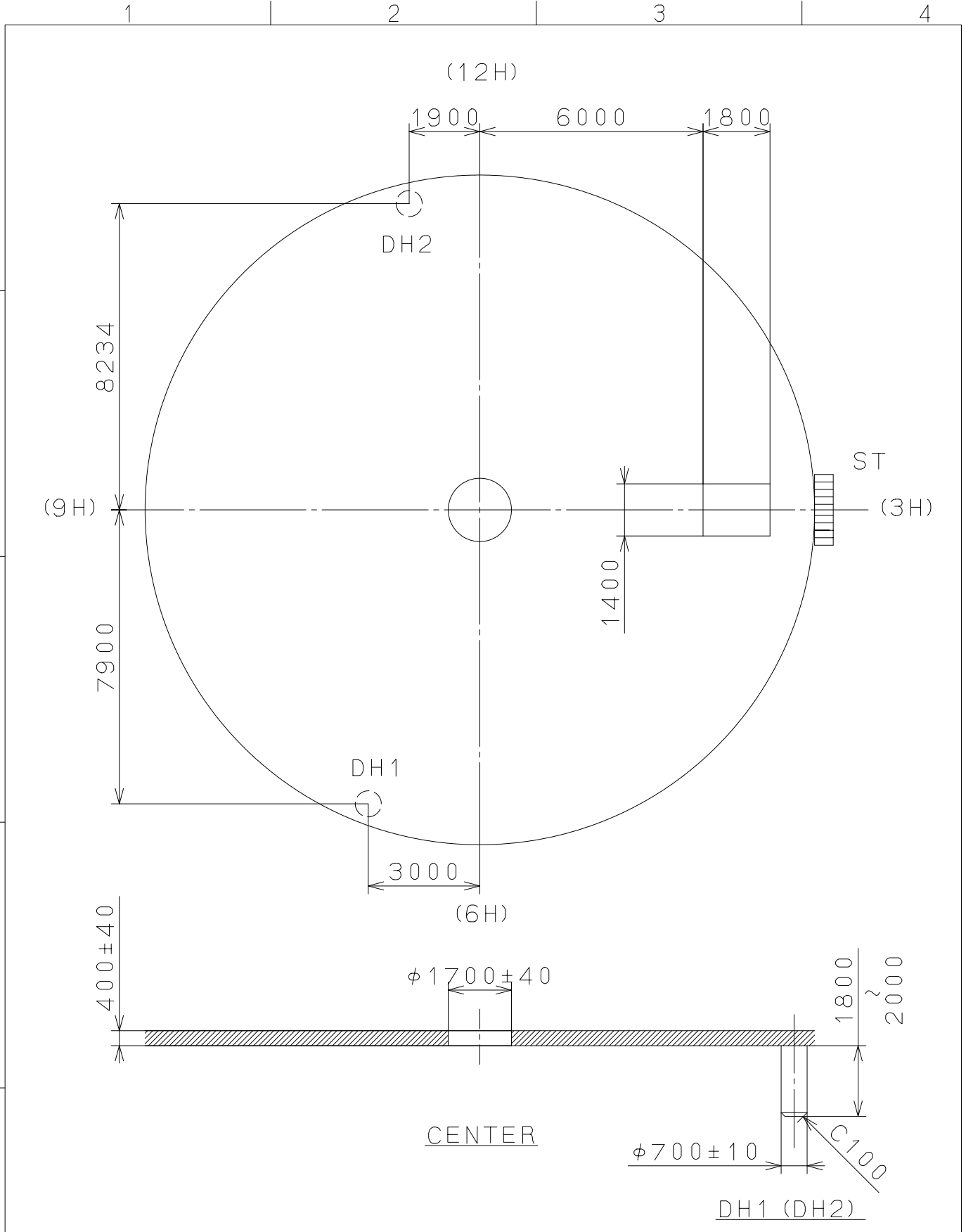


Section a1~a16

△	Quantity	Cal. NO.: GL15				
△	Unit	1/1000 mm				
△	Scale	10/1				
△	Date	Name				
△	Drawn					
Mark	Date	Description	Appr.	Checked	M. Fukuda	Name: Frame for Case
Alterations		Approved				
Material						General Tolerances
Heat Treatment						Dimensions
Hardness						Angles
Plating						

Drawing No.: GL15C000

This drawing is provisional and subject to our reconfirmation and/or revision without notice.



△5			Quantity		Cal.NO.:GL15-00A
△4			Unit	1 / 1000 mm	
△3			Scale	7 / 1	Parts No.:
△2				Date	Name
△1			Drawn		
Mark	Date	Description	Appr.	Checked	M.fukuda Name:
Alterations			Approved		Indications for Dial
Material					Drawing No.:GL15D000
Heat Treatment	General Tolerances				
Hardness	Dimensions				
Plating	Angles				